



MONTHLY MEMBERSHIP PROGRESS REPORT

District 201V3

Results as of: 09/30/2017

GMT: WAYNE OAKES

LOCATION AUSTRALIA

GMT CA

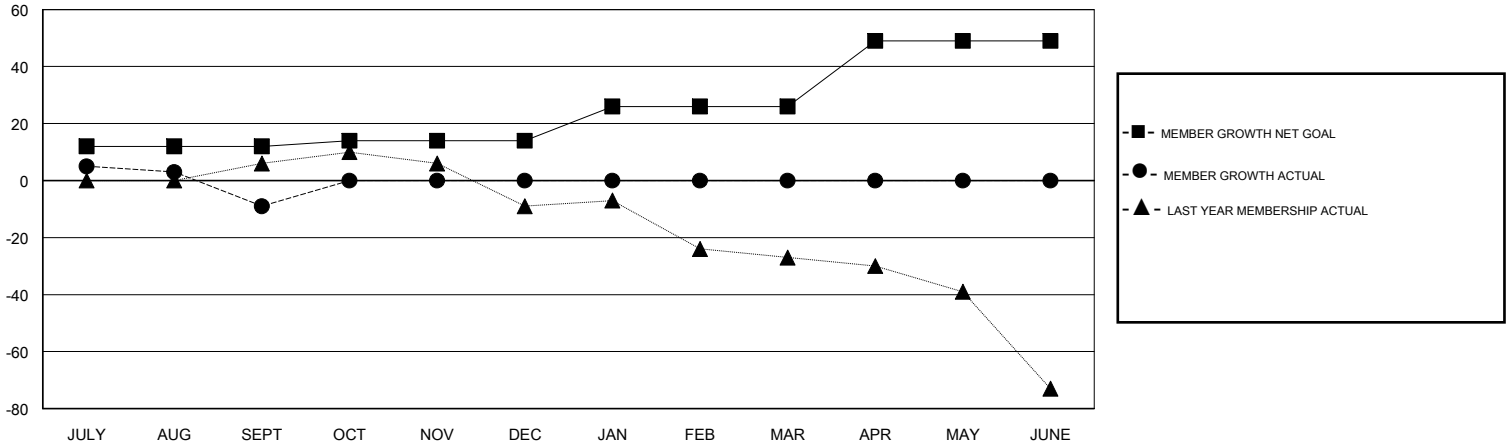
Clubs			
RESULTS FOR 2017-2018			
QUARTER	NEW CLUB GOAL	NEW CLUBS	DROPPED CLUBS
JULY/AUG/SEPT	0	0	0
OCT/NOV/DEC	0	0	0
JAN/FEB/MAR	0	0	0
APR/MAY/JUNE	1	0	0

Members			
RESULTS FOR 2017-2018			
QUARTER	MEMBER GROWTH NET GOAL	MEMBER GROWTH ACTUAL	DROPPED MEMBERS ACTUAL (including transfers)
JULY/AUG/SEPT	12	38	47
OCT/NOV/DEC	2	0	0
JAN/FEB/MAR	12	0	0
APR/MAY/JUNE	23	0	0

GOALS AND ACTUAL NEW CLUBS CUMULATIVE



GOALS AND ACTUAL MEMBERS CUMULATIVE



DROPPED CLUBS: 0	18 CLUBS OF 63 ADDED 1 OR MORE NEW MEMBERS	<u>GENDER DISTRIBUTION</u> MALE 900 (71.94%) FEMALE 351 (28.06%) Women Percentage Fiscal Year Goal: 38%
DROPPED MEMBERS	CLICK HERE FOR CUMULATIVE MEMBERSHIP DATA	TOTAL FAMILY UNIT MEMBERS 196
DECEASED 3		FAMILY MEMBERS PAYING HALF DUES 98
CLUB CANCELLED 0		
OTHER 44		
TOTAL 47		